

# Wide gap Chern Mott insulating phases achieved by design

Hongli Guo<sup>1,2</sup>, Shrubha Gangopadhyay<sup>3</sup>, Okan Köksal<sup>4</sup>,

Rossitza Pentcheva<sup>4</sup>, and Warren E. Pickett<sup>5,\*</sup>

<sup>1</sup>*ICQD/Hefei National Laboratory for Physical Sciences at Microscale,  
and Key Laboratory of Strongly-Coupled Quantum Matter Physics,  
Chinese Academy of Sciences, and Department of Physics,*

*University of Science and Technology of China, Hefei, Anhui 230026, China*

<sup>2</sup>*Synergetic Innovation Center of Quantum Information & Quantum Physics,  
University of Science and Technology of China, Hefei, Anhui 230026, China*

<sup>3</sup>*Department of Chemistry, University of California Davis, Davis, California 95616, USA*

<sup>4</sup>*Department of Physics and Center for Nanointegration Duisburg-Essen (CENIDE),  
University of Duisburg-Essen, 47057 Duisburg, Germany and*

<sup>5</sup>*Department of Physics, University of California Davis, Davis, California 95616, USA*

(Dated: November 9, 2016)

**Running title:** Wide gap Chern phases by design

**Corresponding author:**

**Warren E. Pickett**          [wepickett@ucdavis.edu](mailto:wepickett@ucdavis.edu)

Department of Physics

University of California Davis

Davis CA 95616



## ABSTRACT

Quantum anomalous Hall (QAH) insulators, which display robust boundary charge and spin currents categorized in terms of a bulk topological invariant known as the Chern number,[1] provide the quantum Hall effect without an applied magnetic field. Chern insulators are attracting interest both as a novel electronic phase and for their novel and potentially useful boundary properties. Honeycomb lattice systems such as we discuss here, occupied by heavy transition-metal ions, have been proposed as Chern insulators, but finding a concrete example has been challenging due to an assortment of broken symmetry phases that thwart the topological character. Building on accumulated knowledge of the behavior of the  $3d$  series, we tune spin-orbit and interaction strength together with strain to design two Chern insulator systems with bandgaps up to 130 meV and Chern numbers  $\mathcal{C} = -1$  and  $\mathcal{C} = 2$ . We find, in this class, that a trade-off between larger spin-orbit coupling and strong interactions leads to a larger gap, whereas the stronger SOC correlates with the larger magnitude of the Hall conductivity. Symmetry lowering in the course of structural relaxation hampers obtaining QAH character, as pointed out previously; there is only mild structural symmetry breaking of the bilayer in these robust Chern phases. Recent growth of insulating, magnetic phases in closely related materials with this orientation supports the likelihood that synthesis and exploitation will follow.

## I. INTRODUCTION

The honeycomb lattice,[2] particularly in conjunction with its Dirac points and two-valley nature in graphene,[3] has provided the basic platform for a great number of explorations into new phases of matter and new phenomena. Yet the single band, uncorrelated case of graphene is only the simplest level of what can be realized on honeycomb lattices. The recognition that a perovskite (111) bilayer of  $\text{LaXO}_3$  encased in  $\text{LaAlO}_3$  (we use the notation  $2\text{LXO}$  for an  $X$  bilayer,  $X$ =transition metal [TM]) provides a honeycomb lattice that led to a call for engineering (*i.e.* design) of a Chern insulator in such systems.[4, 5] The origin of the buckled honeycomb lattice is depicted in Fig. 1. A number of model[6–9] and material-

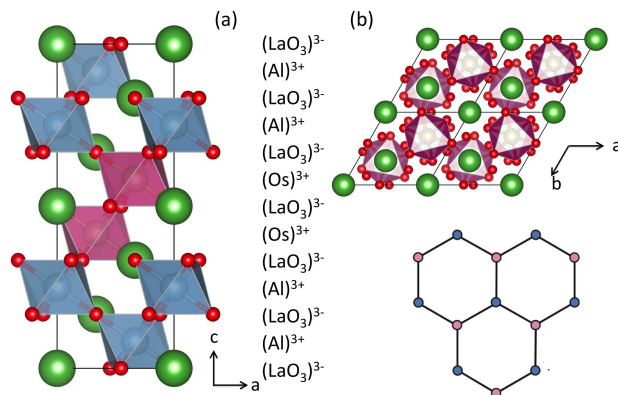


FIG. 1. Geometry of this honeycomb lattice system. (a) Side view of one cell of the  $(LAO)_4/(LXO)_2(111)$  superlattice. (b) Top view of the 2LXO bilayer forming a buckled honeycomb lattice (lower right) from bilayer of Os cations. Blue sites lie in a plane above the plane containing the pink sites.

specific studies[10–16] have probed the possibilities that such systems may offer. The advent of (111)-oriented growth of oxides[17–25] provides a new platform for design of new materials, and especially Chern insulators.

The degree of generalization from graphene is huge. Graphene has a hopping amplitude, or equivalently a velocity, that sets the energy scale, and a two-valley degree of freedom. 2LXO, on the other hand, presents a multi-orbital system with a number of additional degrees of freedom: intraatomic Coulomb repulsion  $U$  and Hund’s rule spin interaction  $J_H$ , cubic crystal field splitting  $\Delta_{cf}$ , trigonal crystal field splitting  $\delta_{cf}$ , spin-orbit coupling (SOC) strength  $\xi$ , orbital-dependent interatomic hopping amplitudes, and band filling  $n_d$ . Altogether, these couple to the lattice to provide two more scales, the Jahn-Teller ( $\lambda_{JT}$ ) and breathing ( $\lambda_{br}$ ) distortion strengths. This list includes more than ten parameters, and the treatment of them from a model Hamiltonian viewpoint, even within mean field, is formidable. Some of these energy scales have been included in model studies,[9] but the coupling to lattice that we find to be a determining factor is too intricate for model Hamiltonian studies. Interplay of  $U$  with large SOC fulfills the requirements of proposed Chern Mott insulators with bandgaps an order of magnitude larger than those studied so far.

An efficient design strategy must seek to identify promising candidates. The density functional theory (DFT) approach is able to treat all the complexities mentioned above straightforwardly as a part of the electronic structure problem, including other factors such

as Madelung potential effects. Also, requiring the choice of atoms from certain classes in the periodic table reduces the scope of the design process from a continuous  $\sim 10$  dimensional space to a Diophantine set, and presents clear opportunities to experimentalists. For specific realizations (here, atom  $X$ ) the many energy scales are known or determined self-consistently. DFT+U treatment requires examination of a few types of likely order parameters (charge, spin, orbital, structural), but the possibilities are also constrained by the vast accumulated knowledge of how TM ions behave in oxides, so the computational complexity becomes manageable. Dynamical correlations may need to be incorporated separately, but they are unrealistic without detailed input from DFT on the symmetry-broken ground states.[12]

Is there a ‘design’ in this system that can be efficient and effective? Two of the current authors have carried out a systematic study of the entire sequence of  $3d$  TM ions on this buckled honeycomb lattice.[14] In three cases  $X=\text{Ti}$ ,  $\text{Mn}$ , and  $\text{Co}$ , a Chern insulating phase was obtained as  $U$  was varied and the structure relaxed,[14] but the combination of relatively large  $U \sim 5$  eV and accompanying symmetry-breaking distortion resulted in trivial Mott insulating ground states. A lively interplay also was observed between pseudocubic local symmetry (each cation lies within an octahedron of six O ions) and global trigonal symmetry of the ideal lattice.[12, 14]

These studies however provided important guidance for design of Chern phases in buckled honeycomb lattices. The emerging design principles became: (a) focus on systems that promote a Dirac point at  $K$  in the symmetric phase, (b) avoid large symmetry-breaking effects such as the Jahn-Teller distortions that destroyed the Chern phases in the  $3d$  systems, (c) vary the strain, as electronic configurations are sensitive to strain, and (d) increase the SOC strength, as it extends the band entanglement over a proportionately greater energy and can be expected to retain entanglement with larger gap. Item (a) is the underlying feature that has made this system such a promising one.[4] Item (b) indicates that the repulsion  $U$ , which also tends to enforce anisotropic, Jahn-Teller-active ions, should be decreased from the  $3d$  value. Item (c), sensitivity to strain, has been found in many studies to influence electronic configurations at interfaces, with its influence on topological nature yet to be quantified. Item (d) is widely postulated, making  $5d$  systems the focus of searches for Chern insulators. We have applied these design principles to explore  $4d$  and  $5d$   $2LXO$  bilayers, finding Chern insulating ground states for both the osmate and the ruthenate members, with gaps up to 30 times larger than previously designed TMO Chern insulators: ultrathin

VO<sub>2</sub>[26, 27] and CrO<sub>2</sub>[28] layers with calculated gaps of 2 meV and 4 meV respectively.

Interest in  $5d$  ions on the honeycomb lattice has focused primarily on the Ir ion,[10, 11, 18, 21] which is not a part of this study. We consider specifically the  $3d \rightarrow 4d \rightarrow 5d$  sequence of ions; for  $d^4$ : Mn, Tc, Re; for  $d^5$ : Fe, Ru, Os. With the considerable changes versus size and chemistry of the TM ion, we have found that the favorable cases shift from one column ( $d^4$ ) to the next ( $d^5$ ) in the periodic table. 2LOsO, with smallest  $U$  and largest SOC, might be the first guess as the most promising candidate. Unexpectedly, we find that the intermediate  $4d$  Ru ion provides the most promising candidate of Chern insulator in this structural class.

For SrIrO<sub>3</sub> iridates (also  $d^5$ ), there are competing indications whether the bilayer perovskite platform will be both ferromagnetic (FM) and insulating as required for a Chern insulator, or rather will assume some less desirable configuration.[10, 17, 22] It is highly encouraging that (111)-grown SrIrO<sub>3</sub> and (Ca,Sr)IrO<sub>3</sub> have been synthesized, with the former found to be magnetic and insulating.[18, 22] We provide below detailed predictions that, once all effects are accounted for, 2LRuO and 2LOsO buckled honeycomb lattices will be Chern insulators with substantial gaps.

## II. RESULTS

DFT+U calculations (see the Methods section and Ref. [14]) have been performed for the  $4d$  candidates  $X$ =Tc and Ru, and the  $5d$  examples  $X$ =Re and Os, in the Mn  $d^4$  and Fe  $d^5$  columns respectively. Two in-plane lattice constants are considered, LaAlO<sub>3</sub> (LAO) denoted  $a_{LAO}$  (3.79Å) and LaNiO<sub>3</sub> (LNO) denoted  $a_{LNO}$  (3.86Å), differing by only 1.8%, still this amount of strain is found to tip the balance between Chern and trivial ground states. Previous DFT studies on Os based oxide compounds adopted values of  $U$  in the range 0.8-3 eV. [25, 29–31] We use  $U_{Os}=1$  eV,  $U_{Ru}=3$  eV,  $U_{Fe}=5$  eV, and find that results are not very sensitive to reasonable variations around these values. The data in Table I include those for low spin  $S = \frac{1}{2}$  Fe, for comparison with Ru and Os. The low spin configuration is 0.5-0.6 eV higher in energy than the high spin state depending on strain, and both FM configurations are higher in energy than the AFM ground state discussed previously.[14] Whereas the high spin ion is spherically symmetric (hence not subject to Jahn-Teller distortion), the low spin state will be more susceptible to distortion.

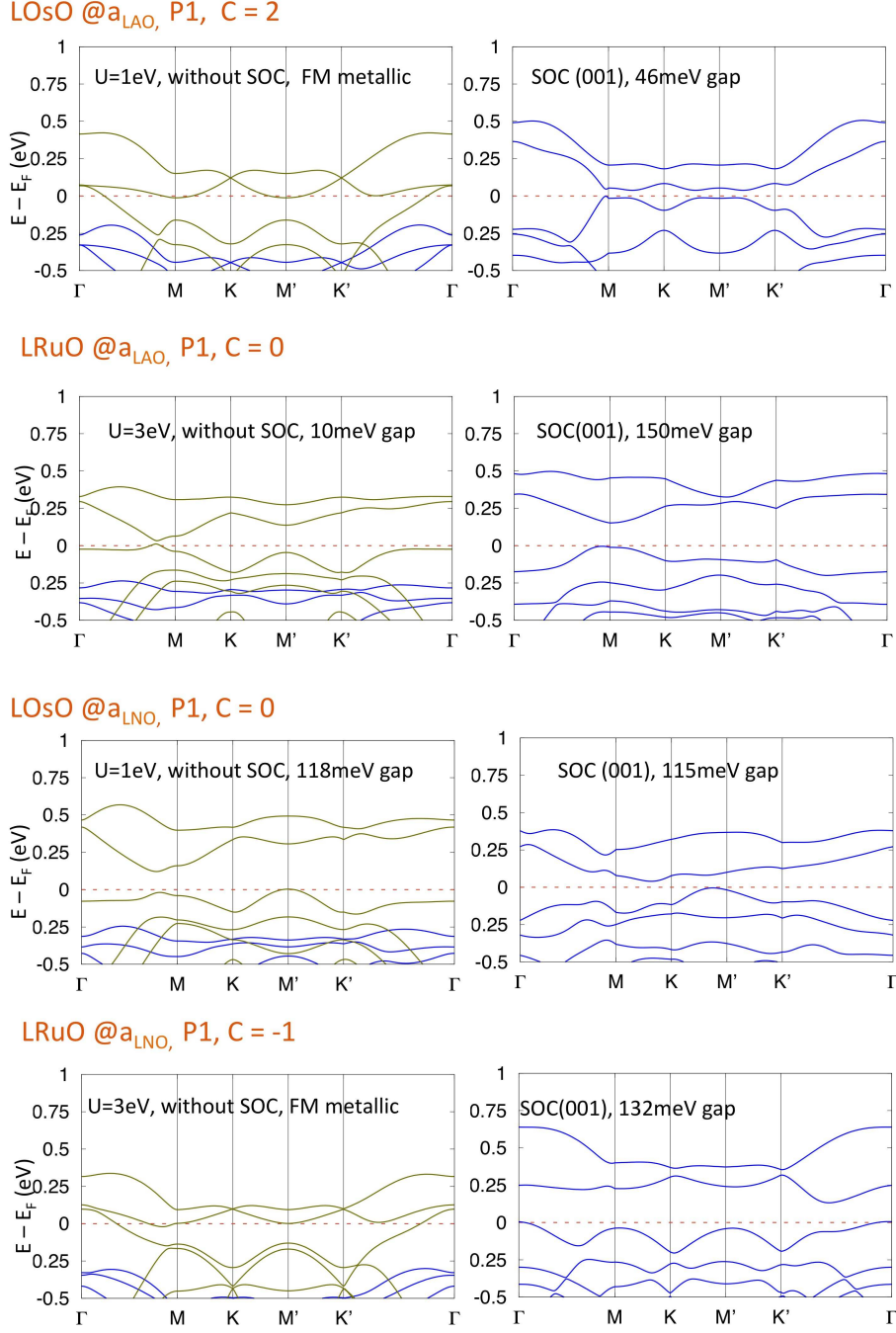


FIG. 2. Top four panels: band structures of the fully relaxed buckled bilayers corresponding to lattice constant  $a_{LAO}$ , for both 2LOsO and 2LRuO. Majority and minority bands are plotted in blue and yellow, respectively. Left panels, before including SOC; right panels, with SOC included. Lower four panels, analogous plots for  $a_{LNO}$ . Note that SOC converts the half metallic FM spectrum for 2LOsO to the gapped Chern insulator  $\mathcal{C}=2$  phase.



Substantial differences due to transition metal size and chemistry are evident. In the  $3d$  series,  $2\text{LMnO}$  provided the most instructive example, by transforming from a Chern insulator phase to a trivial insulator result, during which a JT distortion closes the Chern gap and then reopens a trivial gap.[?] ] The isovalent partners  $X=\text{Tc}$  and  $\text{Re}$  can be dismissed.  $\text{Tc}^{3+}$  is FM but with considerable band overlap, while we did not find  $\text{Re}^{3+}$  to support magnetism in these bilayers.

Moving to the  $d^5$  column (see Table I), low spin FM  $2\text{LFeO}$  is a trivial insulator with a large gap  $\sim 2.5$  eV for both values of strain. The low spin configuration is 0.4-0.5 eV/Fe higher in energy than the high spin state, hence unlikely to be synthesized. We find that, unlike  $2\text{LFeO}$ ,  $4d$   $2\text{LRuO}$  and  $5d$   $2\text{LOsO}$  do not support a high spin state, due to weaker correlation effects than occur in Fe. The resulting single hole in the low spin  $t_{2g}$  subshell reduces the orbital occupation complexity compared to the two-hole  $d^4$  ions, but still shows important flexibility because the trigonal crystal field splitting of  $a_{1g}$  and  $e'_g$  is sensitive to the strain provided by the substrate. The smaller exchange splitting of the low spin ion promotes the tendency to topological entanglement: by lessening the energy separation between opposite spin bands, SOC can enforce stronger entanglement.

For both Os and Ru, and for both lattice constants considered, restricting symmetry to  $P321$  (*i.e.* symmetry equivalent  $X$  sites) and including SOC led to Chern insulating phases, as for the  $3d$  cases  $X=\text{Ti}$ ,  $\text{Mn}$ , and  $\text{Co}$ . [14] With the open  $d$  shell and the spectrum being gapped by  $U$ , these are FM Chern Mott insulators. We restrict our discussion now to the relaxed, symmetry broken (inequivalent  $X$  sites) ground states, [12, 14] confirming the earlier results in the  $3d$  series that full relaxation is essential to make realistic predictions. The basic ground state data, including that of low spin Fe for contrast, are provided in Table I. Fig. 2 presents the band structures for  $2\text{LOsO}$  and  $2\text{LRuO}$ , first without (left panels) and then with SOC (right panels), for both values of the in-plane lattice constant.

The  $\text{Os}^{3+}$  formal valence state, as in  $\text{LaOsO}_3$ , is known as an unstable valence state for solid state synthesis, and  $\text{LaOsO}_3$  is not a reported compound. However, epitaxial methods have been established to enable synthesis of several layers of materials that cannot be grown in thermodynamic conditions.  $\text{LaRuO}_3$ , on the other hand, has been grown by both solid state [32] and epitaxial [33, 34] methods since earlier reports of bulk synthesis. [35, 36] Since  $\text{LaRuO}_3$  is relatively little studied, it offers an additional opportunity of adding another compound to the family of important transition metal oxides.

TABLE I. Characteristics of the ground states of the  $d^5$  buckled honeycomb systems 2LFeO, 2LRuO, and 2LOsO, fully relaxed ( $P1$  symmetry) and including spin-orbit coupling, for each of the two lattice constants. The results for 2LFeO are for the low spin Fe configuration, as contrast to the same configuration of the other two systems. The lower energy high spin results were presented previously.[14]  $\Delta z_{M,M'}$  is the separation of the two metal (Ru or Os) layers, equal to  $a/\sqrt{3}$  for an unrelaxed structure with lattice constant  $a$ .  $m_{orb}$  is the orbital moment of each of the inequivalent metal ions.  $m_{sp}$  is the spin moment per ion (half of the total).

2LFeO	$a_{LAO}$	$a_{LNO}$
Gap (meV)	2478	2510
Chern number	0	0
$d_{M,M}$ (Å)	2.32	2.28
$m_{orb}(\mu_B)$	0.03,0.03	0.02,0.02
$m_{sp}$	0.94,0.94	0.95,0.95
2LRuO	$a_{LAO}$	$a_{LNO}$
Gap (meV)	150	<b>132</b>
Chern number	0	<b>-1</b>
$d_{M,M}$ (Å)	2.43	2.41
$m_{orb}(\mu_B)$	0.08,0.16	0.16,0.16
$m_{sp}$	0.99	0.99
2LOsO	$a_{LAO}$	$a_{LNO}$
Gap (meV)	<b>46</b>	115
Chern number	<b>2</b>	0
$d_{M,M}$ (Å)	2.52	2.40
$m_{orb}(\mu_B)$	0.19,0.19	0.14,0.13
$m_{sp}$	0.81	0.71

### A. 2LaOsO<sub>3</sub>

We first consider 2LOsO, whose largest SOC and smallest  $U$  and hence less tendency for large distortion, might seem to make it the more favorable candidate Chern insulator based on experience with the  $3d$  series. The magnetism is robust, arising even at  $U=0$ . The  $P1$

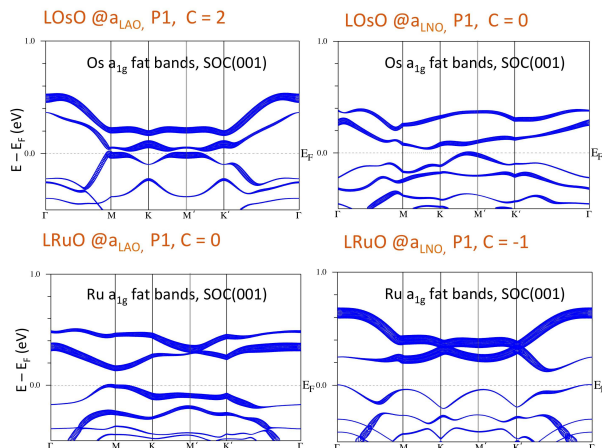


FIG. 3. Fat band plot highlighting the  $a_{1g}$  character at the  $a_{LAO}$  lattice constant. The remaining character is primarily  $e'_g$ . The Chern phases have large  $a_{1g}$  hole character, which as these results demonstrate is sensitive to strain. The  $M$  and  $M'$  points displayed are as labeled on the Berry curvature plot of Fig. 4(b).

symmetry reflects two inequivalent Os sites, but the distortion in this case is minor. Without SOC, the bilayer @ $a_{LAO}$  (see Fig. 2) is a FM half metal with  $1\mu_B$  spin moment per Os, while for @ $a_{LNO}$  the FM state is insulating and trivial. The impact of SOC is overwhelming – band mixing and shifting is so large that there is no visible correspondence between bands without and with SOC.

The orbital moments of the Os1 and Os2 ions are similar,  $0.19\mu_B$  for  $a_{LAO}$  decreasing to  $0.14\mu_B$  for  $a_{LNO}$ . Spin mixing by SOC reduces the total spin moment to  $1.5\pm 0.1\mu_B$ . The gapless band structure for  $a_{LNO}$  becomes gapped to 46 meV for  $a_{LAO}$ , and the Chern number  $\mathcal{C}=2$  establishes that the desired Chern insulating state has been found. As shown in Fig. 2, not only is 2LOsO metallic before SOC is included, but a narrow peak in the DOS at  $E_F$  (see the Supplemental Information) reflects a flat band region nearly coinciding with the Fermi level. For the 3d series, SOC leaves bands mostly intact, only opening gaps at the Dirac point and quadratic band touching points, and opening anticrossings. In 2LOsO, SOC is very large and, as mentioned, bands before SOC cannot be lined up by eye with bands after SOC, *i.e.* entanglement is extensive. Thus for 5d ions, gaps are opened by widespread band rearrangements rather than by simple anticrossings. For 2LOsO, a very significant effect of the substrate lattice constant is that the distance between Os1 and Os2 layers,  $2.52\text{\AA}$  for  $a_{LAO}$ , reduces to  $2.40\text{\AA}$  for  $a_{LNO}$ .

Chandra and Guo[37] have considered several  $4d$  and  $5d$  ions in this same buckled honeycomb lattice, encased in either LAO or SrTiO<sub>3</sub>, including Os but not Ru. In their studies the lattice was restricted to trigonal symmetry, and using GGA (generalized gradient approximation for the functional) only rather than GGA+U. The one Chern insulator they reported was this same 2LOsO bilayer, with a similar band structure near the gap and even a similar gap although restricted to  $P321$  symmetry. The similarity of their results to ours provides evidence that these predictions for a relatively mildly correlated materials are not highly sensitive to theoretical choices. Chandra and Guo did not, however, vary the strain and discover the strong strain dependence of the Chern insulating character.

### B. 2LaRuO<sub>3</sub>

For 2LRuO at  $a_{LAO}$  without SOC, Fig. 2 shows a tiny gap along  $\Gamma - M$  near  $M$ , and an evident band inversion at  $M$  but apparently not at  $M'$  where there is a substantial gap. After SOC, the FM insulating state is preserved but trivial, so the apparent band inversion is not effective in producing a topological phase. The  $a_{LNO}$  case is the most interesting. The half metallic FM band structure becomes, upon including SOC, a  $\mathcal{C} = -1$  Chern insulator with a 132 meV gap. The spin direction is along the  $\hat{c}$ -axis (cubic [111] direction), for which the energy is 22 meV/Ru less than for spin oriented in-plane. For comparison, the larger SOC of Os results in a larger MAE of 37 meV in its Chern phase. Conversely, the smaller SOC of Fe results in orbital moments and MAE an order of magnitude smaller than in Ru.

The main change in orbital occupation upon rotation into the plane is the transfer of 0.06 electrons from  $m = -2$  to  $m = +2$  orbitals. Since the quantization of these orbitals is with respect to cubic [111], this change is not directly related to the orbital moment for spin in-plane. Note, both from the data in Table I and the near symmetry of  $K$  and  $K'$ , and  $M$  and  $M'$ , in the final bands in Fig. 2 that, as for 2LOsO, the Chern phase is very modestly distorted from  $P321$  symmetry. Notably, the magnetic anisotropy energy (MAE) is almost an order of magnitude smaller (3 meV) for 2LRuO at the smaller LAO lattice constant ( $\mathcal{C} = 0$ ) where the sublattice symmetry is more strongly broken (see Table I). The larger MAE can be attributed to the retention of  $e'_g$  quasi-degeneracy in the nearly symmetric Chern phases, which contributes to large anisotropy.[38]

The separation  $\Delta_{z,M,M'}=2.42\pm 0.01\text{\AA}$  of Ru layers in 2LRuO depends only weakly on the

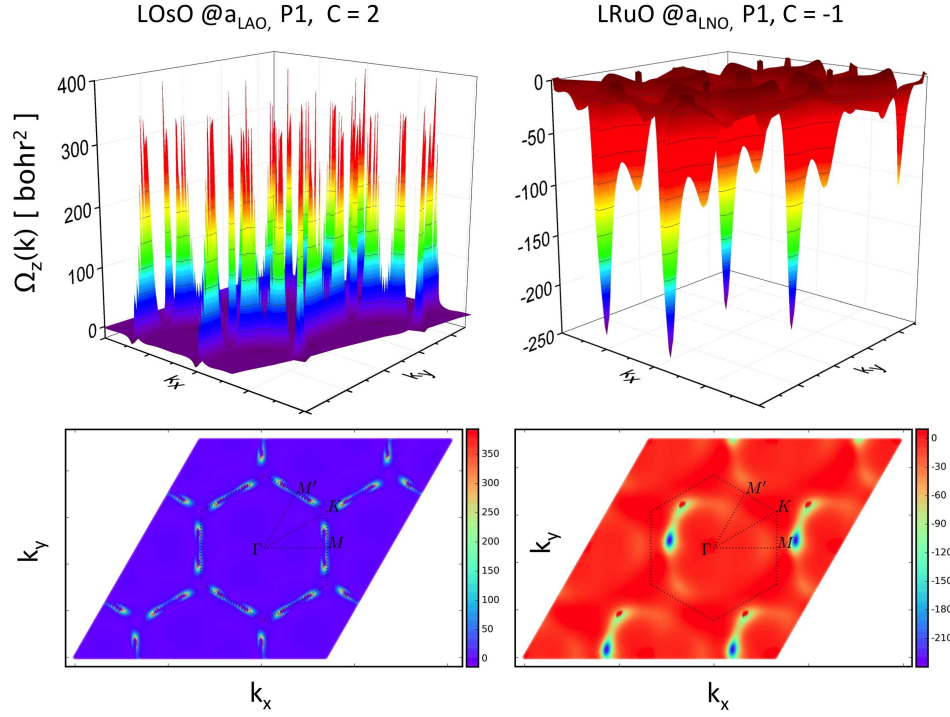


FIG. 4. Surface plot (left) and 2D projected colorplot of the Berry curvatures  $\Omega_z(\vec{k})$  of (upper) 2LOsO ( $\mathcal{C} = 2$ ) and (lower) 2LRuO ( $\mathcal{C} = -1$ ). The character of  $\Omega_z$  is very different for the two Chern insulating states. Note the evident loss of any rotational or mirror symmetry in the case of LRuO, which is difficult to discern in LOsO.

substrate lattice constant. At  $a_{LNO}$ , the Ru1-Ru2 inequivalence is small so the difference in orbital moments is minor, and the spin moment is hardly reduced by SOC. Before SOC is included a peak in the DOS (see Supplementary Information) lying at  $E_F$  appears as for 2LOsO at  $a_{LAO}$ . The band giving rise to the peak is shifted by SOC (see below), resulting in a gap of 132 meV and a  $\mathcal{C} = -1$  Chern insulating phase. For 2LRuO at  $a_{LAO}$ , the two Ru sites show larger differences in orbital moments, 0.08 versus  $0.16\mu_B$ , see Table 1. SOC opens a large gap of 150 meV, but to a trivial insulator state. This last result suggests that the larger gap makes it impossible to sustain the band inversion and spin entanglement that is needed for the QAH phase.

The Berry curvatures  $\Omega_z(\vec{k})$  of the two sister Chern bilayers, pictured in Fig. 4, reflect very different distributions (as well as opposite signs). 2LOsO contains high and narrow peaks, distributed almost symmetrically around the  $K$  points along lines toward the three neighboring  $M$  points. The peaks lie near the minimum gap, a common occurrence. For

2LRuO, the seemingly minor breaking of three-fold symmetry becomes very obvious in  $\Omega_z$ . The most intense peak arises near one  $M$  point, just off the  $M-\Gamma$  line, and a secondary peak occurs in a similar position relative to the  $M'$  point. The fraction of area that contributes to  $\mathcal{C} = -1$  is considerably larger in 2LRuO than that leading to  $\mathcal{C}=2$  in 2LOsO.

### III. DISCUSSION

Both 2LOsO and 2LRuO exhibit the sought-for Chern insulator (quantum anomalous Hall) state, with Chern numbers and gaps  $\mathcal{C}=2$ , 46 meV and  $\mathcal{C}=-1$ , 132 meV respectively, occurring for different choices of substrate. The magnitude of  $\mathcal{C}$  suggests a guideline that larger values result from larger moments and strong SOC, as long as topological character can be maintained.[39] The strong dependence on lateral strain demonstrates that strain offers a means to manipulate Chern insulating phases as well as to engineer other properties, such as the Fermiology and superconductivity in  $\text{Sr}_2\text{RuO}_4$  thin films.[40] For both Os and Ru, larger orbital moments arise in the Chern phase than in the trivial state. Figure 3, emphasizing the bands of  $a_{1g}$  character (the rest of the character is  $e'_g$ ) illustrates critical effects of strain. Strain interchanges  $a_{1g}$  with  $e'_g$  character of the hole dramatically, and in both cases it is the one with strong  $a_{1g}$  hole character that promotes the Chern insulating phase. This result is consistent also with the observation that the Chern phases incur much less distortion than the trivial phases, because an  $a_{1g}$  hole is nondegenerate.

Additional regularities can be observed. Both 2LOsO@ $a_{LNO}$  and 2LRuO@ $a_{LAO}$  in Fig. 2, before accounting for SOC, show an uppermost occupied band lying at  $E_F$  that is flat over much of the zone. These are the cases with smaller orbital moments and they have larger gaps once SOC is included, and they are also the trivial insulating states. The other two cases – the Chern phases – are mildly symmetry broken from threefold symmetry. The Dirac point at K in the unoccupied bands of 2LRuO is hardly gapped at all, and the orbital moments of the two sites are identical. In this way they resemble their  $3d$  counterparts  $X=\text{Ti, Mn, Co}$  for imposed threefold symmetry. The spectrum is topological, but when symmetry is broken more strongly, entanglement is lost. This result is what our “pre-design” (on the series of  $3d$  ions) had led us to conclude.[14] A significant new result is that the topological nature can be tuned with even a modest amount of strain.

Our main result is that the Ru buckled honeycomb layer provides, after full relaxation, a

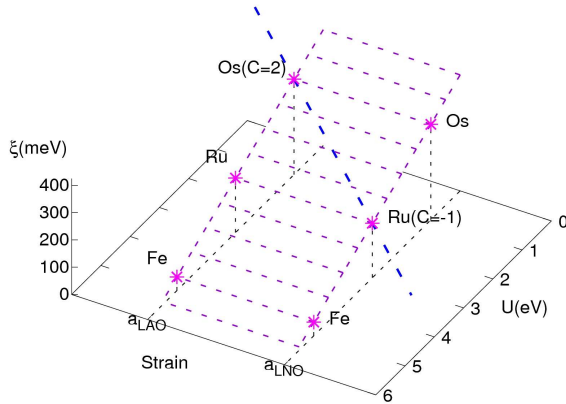


FIG. 5. Schematic diagram in the substrate strain – repulsion  $U$  – spin-orbit coupling strength  $\xi$  space of the region explored in this work. The area, linear in  $U$ , is provided for perspective. The long-dashed diagonal line connects the two Chern phases, as discussed in the text.

QAH (Chern) insulator with a gap of 132 meV. Secondly, the isovalent Os bilayer provides a Chern insulating state with a gap of 46 meV. The calculated anomalous Hall conductivities correspond to Chern numbers  $\mathcal{C}=-1$  and  $\mathcal{C} = +2$ , respectively.

As mentioned in the Introduction, strong interaction  $U$ , large SOC  $\xi$ , and strain and the associated local symmetry are coupled in their impact. A schematic phase diagram is presented in Fig. 5 in  $(\text{strain}, U, \xi)$  space. Isovalent Ru and Os lie along a line of probable Chern phases, as pictured. However, since the Chern number changes between the established points, either (1) the gap must close and then re-open with a different Chern number, or (2) a first-order phase transition must occur, which cannot be foreseen without an accurate theory of the free energy. Ru-Os alloy bilayers evidently provide a rich region for further study. Fortunately, high quality (111) film growth of this kind has been reported for iridates,[18, 22] making synthesis and applications with Os and Ru quite promising. We hope that these results will stimulate intense experimental study of these materials.

#### IV. METHODS

The design of these Chern insulating phase has built upon earlier trend studies of the corresponding  $3d$  series of buckled bilayers,[14] with indications of Chern phases first observed in the study of the nickelate system.[13] The sensitivity to the local environment had been observed in the study of the corresponding titanate system.[12] The extension to  $4d$  and



5d ions naturally indicated the use of the same DFT-based electronic structure methods. The Wien2k code,[41] based on a general potential, all-electron linearized augmented plane wave basis set, forms the basis of our computational method. The generalized gradient approximation (GGA)[42] was chosen for the exchange-correlation functional, supplemented by mean-field electronic correlations as described by the GGA+U functional.[43] In line with earlier work on the corresponding bulk oxides, the intra-atomic repulsion strengths were chosen as  $U_{Os}=1$  eV,  $U_{Ru}=3$  eV, and Hund's coupling  $J=0.5$  eV was used for both. The values for Fe were  $U_{Fe}=5$  eV,  $J=0.7$  eV.  $U = 8$  eV on the La 4f orbitals is applied to displace them upward somewhat, in line with what is observed in inverse photoemission data. The computational results were found to be robust with respect to reasonable variations of the onsite Coulomb repulsion strength.

The influence of strain was investigated by setting the lateral lattice constant separately to those of LAO and LNO,  $a_{LAO} = 3.79\text{\AA}$  or  $a_{LNO} = 3.86\text{\AA}$ , simulating superlattices grown either on an LAO(111) substrate, or an LNO substrate with +1.8% relative strain. The out-of-plane lattice parameter  $c$  was first chosen to be that of  $(LaNiO_3)_2/(LaAlO_3)_4(111)$  studied by Doennig and co-authors[13], then the  $c$  lattice parameter was optimized and the atomic coordinates were relaxed to minimize the energy, consistent with the imposed symmetry. Specifically, octahedral tilts and distortions were allowed when obtaining the final results. Calculations were first done with symmetry constrained to space group  $P321$  (threefold rotation plus inversion), then unconstrained to  $P1$  symmetry (no symmetry) to obtain full relaxation.

A  $20 \times 20 \times 6$  k-point mesh was used for self-consistency. Structural relaxations were carried out with SOC included. SOC was also included in the electronic properties calculations with (001) as the spin direction (and also with in-plane spin direction, to obtain the magnetocrystalline anisotropy energy). Subsequently we used Wannier interpolation based on maximally localized Wannier functions (MLWFs) to calculate the Berry curvature and the anomalous Hall conductivity, and thereby to obtain the Chern number.[44–46] The final zone integration of the strongly structured Berry curvature requires a very dense k-point grid in the BZ.

The Bloch wave functions were projected onto the  $d$  local orbitals of Os, Ru, or Fe to obtain MLWFs,[44] which serve as the basis for further analysis. The MLWF-interpolated energy bands are in excellent agreement with the Wien2k bands. The Berry curvature  $\Omega_z(\mathbf{k})$



is obtained from all bands below the Fermi level beginning from the definition

$$\Omega_z(\mathbf{k}) = - \sum_n^{occ} \sum_m^{unocc} 2Im \frac{\langle u_{n\mathbf{k}} | v_x | u_{m\mathbf{k}} \rangle \langle u_{m\mathbf{k}} | v_y | u_{n\mathbf{k}} \rangle}{(\varepsilon_{m\mathbf{k}} - \varepsilon_{n\mathbf{k}})^2} \quad (1)$$

and performing manipulations required by the use of a finite set of MLWFs.[45] The Berry curvature is integrated over the Brillouin zone to obtain the anomalous Hall conductivity using

$$\sigma_{xy} = -\frac{e^2}{\hbar} \sum_n \int_{BZ} \frac{d\mathbf{k}}{(2\pi)^3} f_n(\mathbf{k}) \Omega_{n,z}(\mathbf{k}) = -\frac{e^2}{\hbar} C, \quad (2)$$

where  $\sigma_{xy} = -\sigma_{yx}$  is the antisymmetric part of the conductivity. The Chern numbers were computed by sampling a dense k-point grid of  $300 \times 300 \times 50$ .

## V. AVAILABILITY OF DATA AND MATERIALS.

The computer codes used in this work are referenced and are available publicly (Wien2k at modest cost). Additional explanation and figures, including orbital-projected densities of states and the Hall conductivity versus chemical potential, are provided in the Supplementary Information. Communication regarding additional details should proceed through W.E.P.

## VI. ACKNOWLEDGMENTS.

The authors acknowledge helpful discussions with D. Arovas, A. Essin, K. Koepernik, K.-L. Lee, V. Pardo, and Y. Quan.

## VII. CONTRIBUTIONS

This project was conceived by W.E.P. and R.P., and supervised by W.E.P. Calculations were carried out on the Ru and Os systems by H.G., with important assistance provided by S.G. O.K. performed the calculations on the Fe systems, overseen by R.P. All authors contributed to the analysis, and W.E.P. wrote the manuscript.

## VIII. COMPETING INTERESTS

The authors declare no competing interests.

## IX. FUNDING

The calculations were performed in Environmental Molecular Sciences Laboratory at the PNNL and National Energy Research Scientific Computing Centre (NERSC). This work was supported by the China Scholarship Council and the NSFC 21373190 (H.G.), by the German Science Foundation within SFB/TR80, project G3 (R.P.), and by US National Science Foundation Grant DMR-1534719 (W.E.P.) under the Designing Materials to Engineer and Revolutionize our Future program.

- 
- [1] Thouless, D. J., Kohmoto, M., Nightingale, M. P., & den Nijs, M., Quantized Hall Conductance in a Two-Dimensional Periodic Potential, *Phys. Rev. Lett.* **49**, 405-408 (1982).
  - [2] Haldane, F. D. M., Model for a Quantum Hall Effect without Landau Levels: Condensed-Matter Realization of the “Parity Anomaly,” *Phys. Rev. Lett.* **61**, 2015-2018 (1988).
  - [3] Castro Neto, H. H., Guinea, F., Peres, N. M. R., Novoselov, K. S., & Geim, A. K., The electronic properties of graphene, *Rev. Mod. Phys.* **81**, 109-162 (2009).
  - [4] Xiao, D., Zhu, W., Ran, Y., Nagaosa, N., & Okamoto, S., Interface engineering of quantum Hall effects in digital transition metal oxide heterostructures, *Nat. Commun.* **2**, 596 (2011).
  - [5] Wright, A. R., Realising Haldane’s vision for a Chern insulator in buckled lattices, *Sci. Rep.* **3**, 2736 (2013).
  - [6] Rüegg, A. & Fiete, G. A., Topological insulators from complex orbital order in transition-metal oxides heterostructures, *Phys. Rev. B* **84**, 201103 (2011).
  - [7] Yang, K.-Y. *et al.*, Possible interaction-driven topological phases in (111) bilayers of  $\text{LaNiO}_3$ , *Phys. Rev. B* **84**, 201104(R) (2011).
  - [8] Rüegg, A., Mitra, C., Demkov, A. A., & Fiete, G. A., Electronic structure of  $(\text{LaNiO}_3)_2/(\text{LaAlO}_3)_N$  heterostructures grown along [111], *Phys. Rev. B* **85**, 245131 (2012).
  - [9] Okamoto, S., Doped Mott Insulators in (111) Bilayers of Perovskite Transition-Metal Oxides with a Strong Spin-Orbit Coupling, *Phys. Rev. Lett.* **110**, 066403 (2013).
  - [10] Lado, J., Pardo, V., & Baldomir, D., *Ab initio* study of  $Z_2$  topological phases in perovskite (111)  $(\text{SrTiO}_3)_7(\text{SrIrO}_3)_2$  and  $(\text{KTaO}_3)_7(\text{KPtO}_3)_2$  multilayers, *Phys. Rev. B* **88**, 155119 (2013).

- [11] Okamoto, S. *et al.*, Correlation effects in (111) bilayers of perovskite transition-metal oxides. Phys. Rev. B **89**, 195121 (2014).
- [12] Doennig, D., Pickett, W. E., & Pentcheva, R., Massive Symmetry Breaking in LaAlO<sub>3</sub>/SrTiO<sub>3</sub>(111) Quantum Wells: A Three-Orbital, Strongly Correlated Generalization of Graphene, Phys. Rev. Lett. **111**, 126804 (2013).
- [13] Doennig, D., Pickett, W. E., & Pentcheva, R., Confinement-driven Transitions between Topological and Mott Phases in (LaNiO<sub>3</sub>)<sub>N</sub>/(LaAlO<sub>3</sub>)<sub>M</sub>(111) Superlattices Phys. Rev. B **89**, 121110 (2014).
- [14] Doennig, D., Baidya, S., Pickett, W. E., & Pentcheva, R., Design of Chern and Mott insulators in buckled 3d oxide honeycomb lattices, Phys. Rev. B **93**, 165145 (2016).
- [15] Weng, Y., Huang, X., Yao, Y., & Dong, S., Topological magnetic phase in LaMnO<sub>3</sub> (111) bilayer, Phys. Rev. B **92**, 195114 (2015).
- [16] Wang, Y., Wang, Z., Fang, Z. & Dai, X., Interaction-induced quantum anomalous Hall phase in (111) bilayer of LaCoO<sub>3</sub>, Phys. Rev. B **91**, 125139 (2015).
- [17] Chen, Y. & Kee, H.-Y., Topological phases in iridium oxide superlattices: quantized anomalous charge or valley Hall insulators, Phys. Rev. B **90**, 195145 (2014).
- [18] Hirai, D., Matsuno, J., & Takagi, H., Fabrication of (111)-oriented Ca<sub>0.5</sub>Sr<sub>0.5</sub>IrO<sub>3</sub>/SrTiO<sub>3</sub> superlattices – a designed playground for honeycomb physics, APL Matl. **3**, 041508 (2015).
- [19] Matsuno, J. *et al.*, Engineering a spin-orbital magnetic insulator by tailoring superlattices, Phys. Rev. Lett. **114**, 247209 (2015).
- [20] Jia, Y. *et al.*, Exchange coupling in (111)-oriented La<sub>0.7</sub>Sr<sub>0.3</sub>MnO<sub>3</sub>/La<sub>0.7</sub>Sr<sub>0.3</sub>FeO<sub>3</sub> superlattices, Phys. Rev. B **92**, 094407 (2015).
- [21] Nie, Y. F. *et al.*, Interplay of spin-orbit interaction, dimensionality, and octahedral rotations in semimetallic SrIrO<sub>3</sub>, Phys. Rev. Lett. **114**, 016401 (2015).
- [22] Anderson, T. J. *et al.*, Metastable honeycomb SrTiO<sub>3</sub>/SrIrO<sub>3</sub> heterostructures, Appl. Phys. Lett. **108**, 151604 (2016).
- [23] Jia, Y. *et al.*, Thickness dependence of exchange coupling in (111)-oriented perovskite oxide superlattices, Phys. Rev. B **93**, 104403 (2016).
- [24] Kim, T. H. *et al.*, Polar metals by geometric design, Nature **533**, 68 (2016).
- [25] Middey, S., Debnath, S., Mahadevan, P., & Sarma, D. D., NaOsO<sub>3</sub>: A high Neel temperature 5d oxide, Phys. Rev. B **89**, 134416 (2014).

- [26] Huang, H., Liu, Z., Zhang, H., Duan, W., & Vanderbilt, D., Emergence of a Chern-insulating state from a semi-Dirac dispersion, *Phys. Rev. B* **92**, 161115(R) (2015)
- [27] Pardo, V. & Pickett, W. E., Half-metallic semi-Dirac Point Generated by Quantum Confinement in TiO<sub>2</sub>/VO<sub>2</sub> Nanostructures, *Phys. Rev. Lett.* **102**, 166803 (2009).
- [28] Cai, T. *et al.*, Single-spin Dirac Fermion and Chern insulator based on simple oxides, *Nano Lett.* **15**, 6434 (2015).
- [29] Pardo, V. & Pickett, W. E., Compensated magnetism by design in double perovskite oxides, *Phys. Rev. B* **80**, 054415 (2009).
- [30] Xiang, H. J. & Whangbo, M. H., Cooperative effect of electron correlation and spin-orbit coupling on the electronic and magnetic properties of Ba<sub>2</sub>NaOsO<sub>6</sub>, *Phys. Rev. B* **75**, 052407 (2007).
- [31] Gangopadhyay, S. & Pickett, W. E., Spin-orbit coupling, strong correlation, and insulator-metal transitions: The  $J_{eff} = 3/2$  ferromagnetic Dirac-Mott insulator Ba<sub>2</sub>NaOsO<sub>6</sub>, *Phys. Rev. B* **91**, 045133 (2015).
- [32] Sugiyama, T. & Tsuda, N., Electrical and magnetic properties of Ca<sub>1-x</sub>La<sub>x</sub>RuO<sub>3</sub>, *J. Phys. Soc. Jpn.* **68**, 3980-3987 (1999)/
- [33] Kimura, M., Ito, A., Kimura, T., & Goto, T., Preparation of LaRuO<sub>3</sub> films by microwave plasma enhanced chemical vapor deposition, *Thin Solid Films*, **520**, 1847 (2012).
- [34] Labhsetwar, N. K., Watanabe, A., & Mitsunashi, T. New improved syntheses of LaRuO<sub>3</sub> perovskites and their applications in environmental catalysis, *Appl. Catalysis B* **40**, 21 (2003).
- [35] Bouchard, R. J. & Weiher, J. F., La<sub>x</sub>Sr<sub>1-x</sub>RuO<sub>3</sub>: a New Perovskite Series, *J. Solid State Chem.* **4**, 80 (1972).
- [36] Kobayashi, H., Nagata, M., Kanno, R., & Kawamoto, Y., Structural Characteriation of the Orthorhombic Perovskites: [ARuO<sub>3</sub> (A=Ca, Sr, La, Pr)], *Mat. Res. Bull.* **29**, 1271-1280 (1994).
- [37] Chandra, H. K. & Guo, G. Y., arXiv:1512.08843.
- [38] Ou, X., Wang, H., Fan, F., Li, Z., & Wu, H., Giant Magnetic Anisotropy of Co, Ru, and Os Adatoms on MgO (001) Surface, *Phys. Rev. Lett.* **115**, 257201 (2015).
- [39] Wang, J., Lian, B., Zhang, H., Xu, Y., & Zhang, S. C., Quantum anomalous Hall effect with higher plateaus, *Phys. Rev. Lett.* **111**, 136801 (2013).

- [40] Burganov, B. *et al.*, Strain Control of Fermiology and Many-Body Interactions in Two-Dimensional Ruthenates, *Phys. Rev. Lett.* **116**, 197003 (2016).
- [41] Blaha, P., Schwarz, K., Madsen, G. K. H., Kvasnicka, D., & Luitz, J., *WIEN2k, An Augmented Plane Wave Plus Local Orbitals Program for Calculating Crystal Properties*, ISBN 3-9501031-1-2 (Vienna University of Technology, Vienna, Austria, 2001).
- [42] Perdew, J. P., Burke, K., & Ernzerhof, M., Generalized Gradient Approximation Made Simple, *Phys. Rev. Lett.* **77**, 3865-3868 (1996).
- [43] Ylvisaker, E. R., Koepernik, K., & Pickett, W. E., Anisotropy and Magnetism in the LSDA+U Method, *Phys. Rev. B* **79**, 035103 (2009).
- [44] Mostofi, A. A. *et al.*, *wannier90*: A tool for obtaining maximally-localised Wannier functions, *Comput. Phys. Commun.* **178**, 685-699 (2008).
- [45] Wang, X., Yates, J. R., Souza, I., & Vanderbilt, D., *Ab initio* calculation of the anomalous Hall conductivity by Wannier interpolation, *Phys. Rev. B* **74**, 195118 (2006).
- [46] Kuneš, J. *et al.*, Wien2wannier: From linearized augmented plane waves to maximally localized Wannier functions, *Comp. Phys. Commun.* **181**, 1888-1895 (2010).